



GAS WIND PROTECTOR

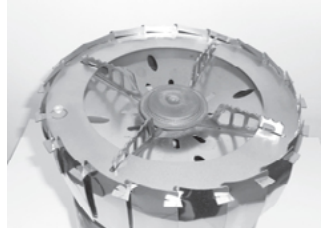
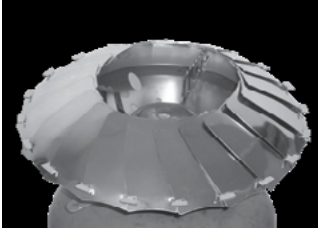




GAS WIND PROTECTOR



HOW TO USE



- Remove PVC protection from leaves before use!
- Open leaves.
- Secure grooves in ring over wings of cooker top.
- Ensure that the slots in the Wind Protector are firmly secured on wings of cooker top.



WARNING: SURFACES WILL BECOME HOT. WHEN IN USE KEEP OUT OF REACH OF CHILDREN AND PETS - ALLOW TO COOL OFF - DO NOT TOUCH WHEN IN USE. CAM PRODUCTS WILL NOT BE HELD RESPONSIBLE FOR ANY INJURIES.

OTHER AVAILABLE PRODUCTS

FLAT PACK BASIC



FLAT PACK DELUXE LONG



VERTICAL SPIT



WWW.CAMPROD.CO.ZA

